



Standard Materials Guide

Trendway >

Standard Materials Guide

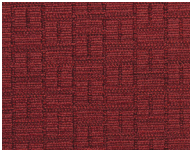


Seating Fabric Grade A

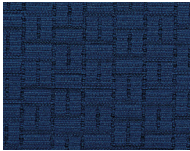
Cadence



Pearl ZOP



Ruby ZOU



Sapphire ZOY

Dillon



Sage KPW



Williamsburg KR3



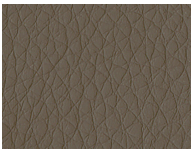
Luggage KPU



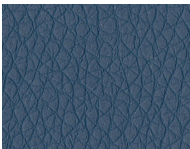
Lipstick KPT



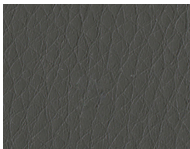
Thunder KR2



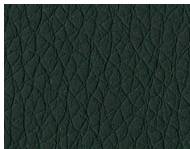
Java KPR



Ocean KPV

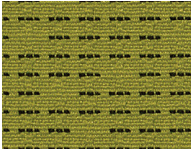


Graphite KPP

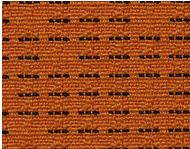


Black KPG

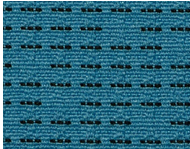
Input



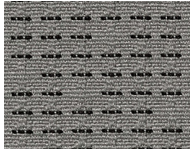
Lime ZIP



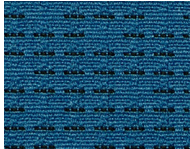
Squash Z1Y



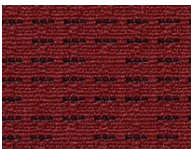
Sky Z1X



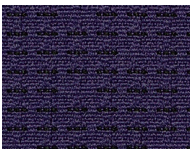
Dove Z1J



Delft Z1H



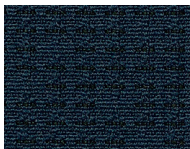
Crimson Z1G



Orchid Z1U



Fossil Z1M

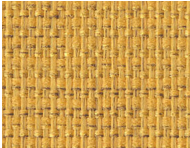


Midnight Z1R

Intuition



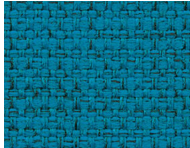
Bisque Z27



Honey Z2C



Sage Z2G

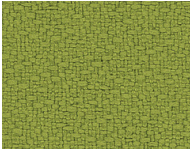


Peacock Z2E

Open House



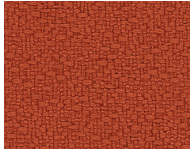
Angora BEI



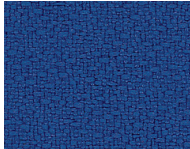
Green Apple BE7



Goose BEG



Pumpkin A65



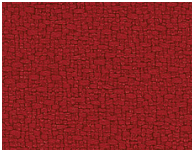
Lapis BE5

Standard Materials Guide

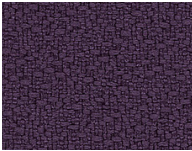


Seating Fabric Grade A

Open House continued



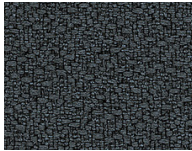
Red Delicious A63



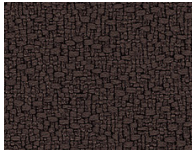
Aubergine A69



Fern KX3



Graphite BE9



Coffee Bean B5A



Midnight A67



Onyx A64

Smith



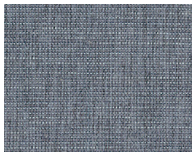
Fawn Z9H



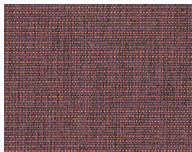
Granite Z9G



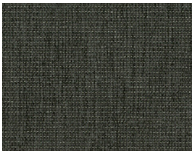
Deep Taupe Z9J



Denim Z9F

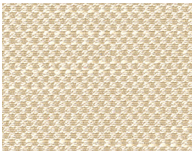


Plum Z9K

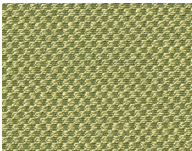


Slate Z9M

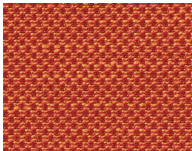
Tome



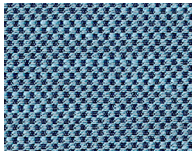
Sisal ZA0



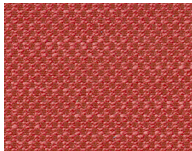
Sorrel ZC1



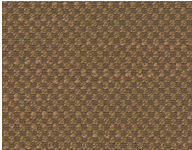
Poppy ZA3



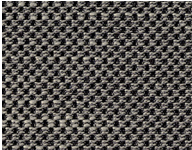
Jewel ZA5



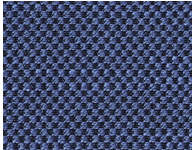
Scarlet ZA2



Walnut ZA1



Charcoal Z9Y

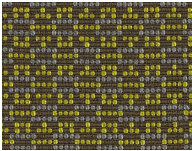


Sapphire ZA4

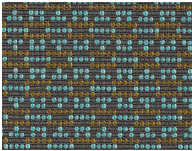
Standard Materials Guide

Seating Fabric Grade B

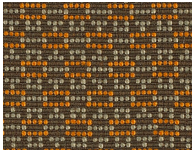
Bobby



Moss ZAN



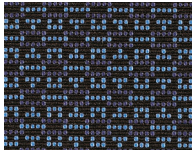
Aqua ZAM



Glow ZAJ

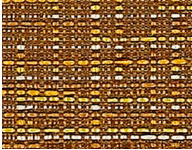


Anchor ZAP



Iris ZAK

Guild



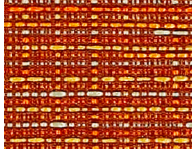
Amber ZC4



Dover ZCA



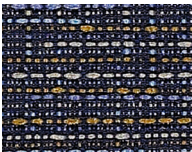
London ZC9



Mandarin ZC5



Shale ZCC



Indigo ZC8



Anise ZC3



Garnet ZC6

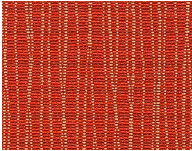


Plum ZC7

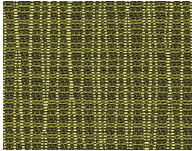
Graph



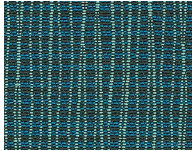
Alpine ZAX



Poppy ZAT



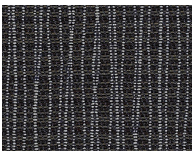
Parrot ZAY



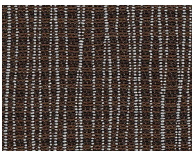
Tidal ZAU



Alloy ZAW



Anchor ZAP

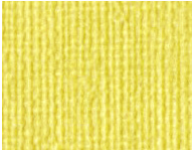


Bark ZAR

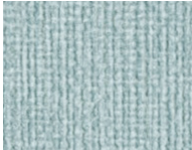
Linette



Platinum ZAG



Moss ZA7



Waterscape ZA8



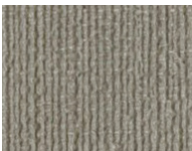
Ash ZAH



Toffee ZAF



Flame ZAC



Steel ZAD



Cola ZAE



Denim ZAA

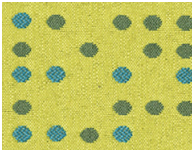


Peacock ZA9

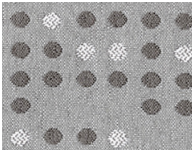
Standard Materials Guide

Seating Fabric Grade B

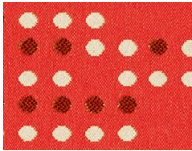
Punch Card



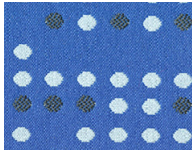
Citronelle Z98



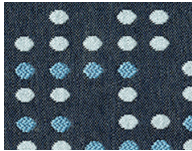
Gray Z9D



Red Z9A



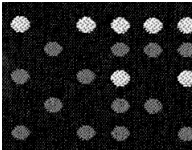
Blue Jay Z99



Atlantic Z97



Earth Z9C

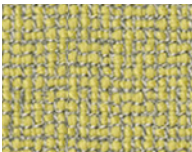


Domino Z9E

Stencil



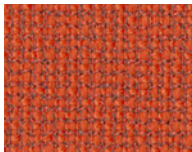
Barley Z9P



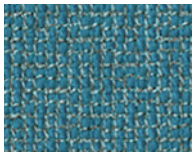
Lemon Grass Z9R



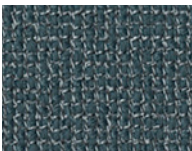
Marble Z9X



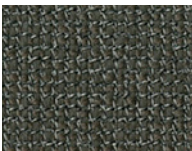
Cayenne Z9T



Turquoise Z9V



Blue Coral Z9U



Slate Z9N



Midnight Z9W

Panel Fabric Grade O

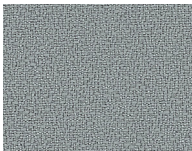
Framework



Grotto KJX



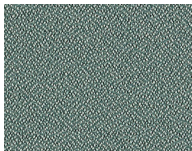
Sandy Pebble B4V



Grey Blue B4X



Eucalyptus B4Y



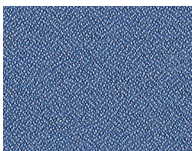
Hunter BFP



Dove Grey BJ7



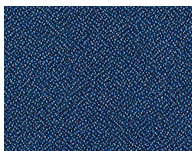
Cappucino KK1



Marble BFR

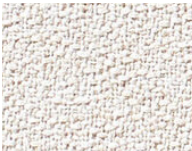


Espresso KK2



Twilight BG8

Merge



Marshmallow Z4D



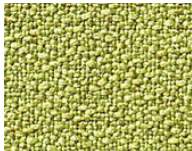
Dove Z42



Driftwood Z43



Fawn Z45

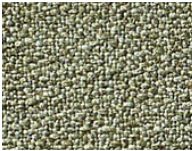


Green Apple Z49

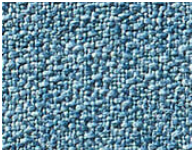
Standard Materials Guide

Panel Fabric Grade 0

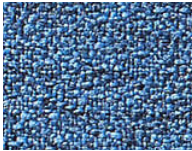
Merge continued



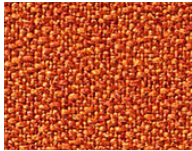
Ivy Z4A



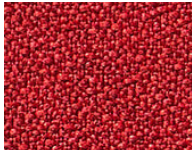
Eucalyptus Z44



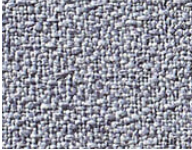
Midnight Z4F



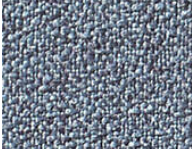
Mandarin Z4C



Fire Engine Z46



Graphite Z47



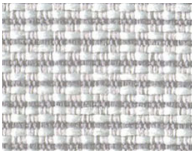
Slate Z4H

Panel Fabric Grade 1

Intermix



Swan KDR



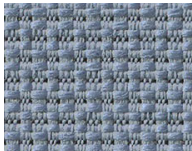
Seagull KDH



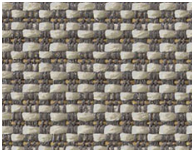
Rocket Ship KDJ



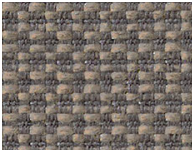
Foggy KDM



Neptune KDT



Husky KDK

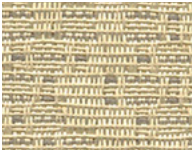


Smokey Quartz KDV

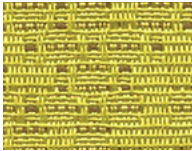
Netiquette



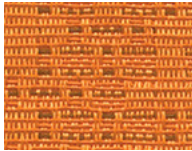
Analog KK5



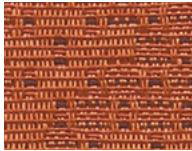
Chipset KK3



Refresh KKA



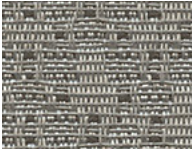
Gamma KK8



Vector KK9



Dashboard KK4



Schema KK6



Inkjet KK7



Pixel KKC

Standard Materials Guide

Panel Fabric
Grade 1

Pursuit



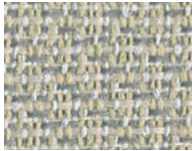
Dove KDA



White Linen KDD



Whisper KD9



Mist Grey KDC



Cement KDG



Elephant KDF

Aurora



Cloud Z55



Latte Z56



Frost Z54



Pewter Z57



Granite Z58

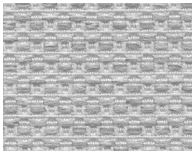
Chase



Ecru Z4M



Coin Z4K



Shadow Z4N



Mushroom Z4P



Pumice Z4R

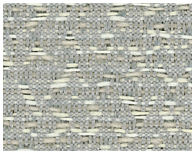
Mingle



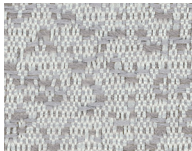
Biscuit Z53



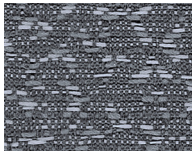
Wheatberry Z52



Winter Z51

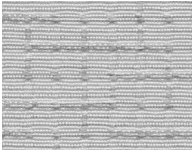


Crystal Z4Y



Carbon Z4X

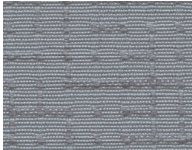
Amaze



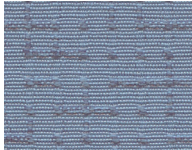
Platinum Z4T



Morel Z4W



Steel Z4V



Sky Z4U

Standard Materials Guide

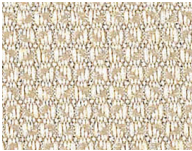


Panel Fabric Grade 2

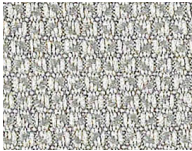
Pact



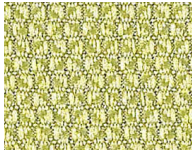
Toasty BMX



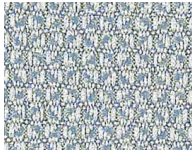
Putty BMN



Patina BMN



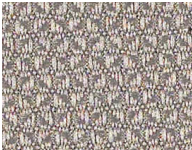
Fern BME



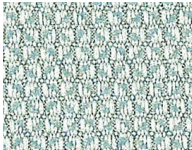
Harbour BMF



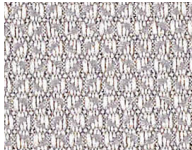
Aloe BM5



Sketch BMU



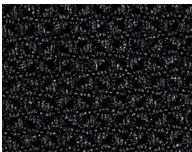
Coastal BM8



Dove BMA

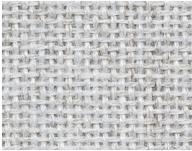


Taupe BMW



Midnight BMJ

Tabby Weave



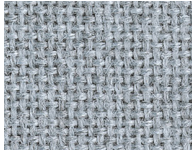
Silver Papier BV2



Quartz 380



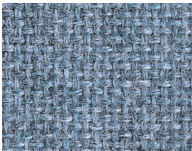
Cement Mix QQ3



Crystal Blue 175



Gray Mix 238



Wedgewood 150



Medium Grey K99

Grade 3

Anchorage



Birch AQ8



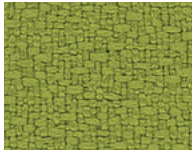
Vanilla AQ1



Angora AR1



Slate AQ5



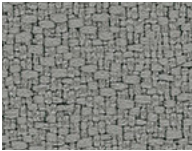
Green Apple BFF



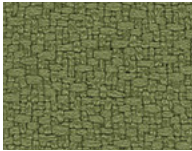
Anchorage
continued



Pool KX1



Asteroid AR0



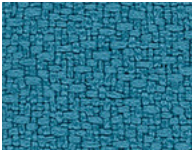
Willow BFG



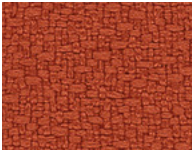
Quarry Blue AQ6



Wolf BFJ



Waterfall BXP



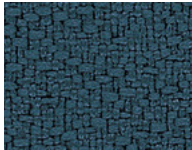
Pumpkin BF2



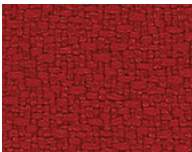
Thistle BFC



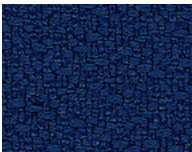
Lapis BFA



Deep Water AQ7



Red Delicious BFN



Cobalt BF9



Graphite BFM



Aubergine BF4

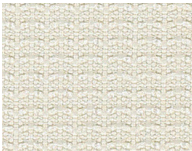


Midnight BFD

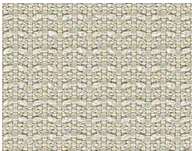


Onxy GEB

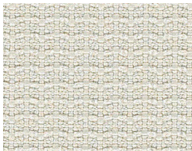
Glint



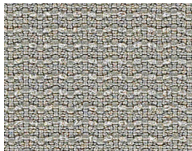
Opal KG9



Serene KGE



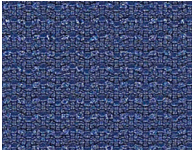
Gypsum KG7



Column KG5



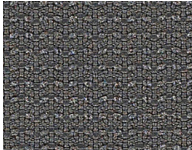
Relic KGC



Caspian KG4



Pumice KJ2



Shale KGF

For additional options that are in grade and in stock search our 5 Clicks real time inventory.

Click Here

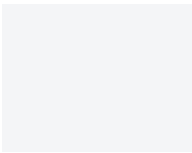


Standard Materials Guide

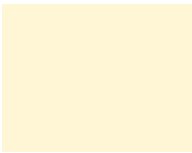


HPL
Solid Color
Grade 1

HPL Code/
Edge Code



Designer White
J0C/E1



Stucco J11/J



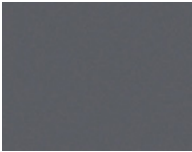
Light Gray 573/L



Sand J20/Y



Shadow J04/E7

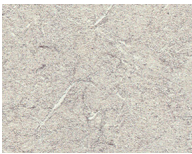


Graphite J9D/E6

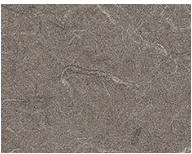


Charcoal 583/K

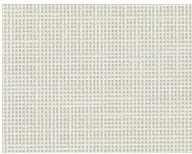
Patterned
Grade 1



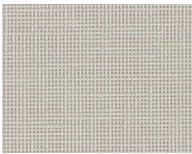
White Tigris J09



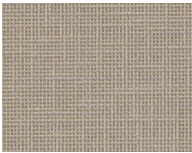
Evening Tigris JM4



Crisp Linen
J69/EB



Classic Linen
J6A/E9



Casual Linen
J6B/E8



Sarum Twill
J9G/EE



Earthen Twill
J9H/EG



Graphite Twill
J9J/EH

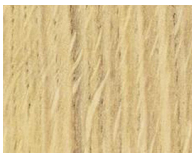
Woodgrains
Grade 1



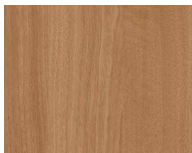
Beigewood
JOG/W8



Fusion Maple
J25/W5



Finnish Oak
J98/WY



Brazilwood
J0D/WE



Wild Cherry
J1R/W6



Walnut J99/WZ



Empire Mahogany
J2A/W7



Espresso Pearwood
J9X/ER

Standard Materials Guide



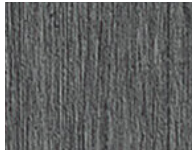
Woodgrains
Grade 2



Phantom Pearl
J9A/E3

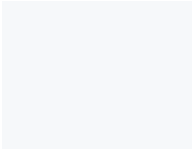


Phantom Ecrú
J9B/E4



Phantom Charcoal
J9C/E5

TFL
Solid Color
Grade 1



Designer White
XZH



Black XZ4

TFL Code/
Edge Code

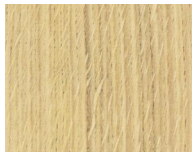
Woodgrains
Grade 1



Beigewood
XZ8



Fusion Maple
XZ2



Finnish Oak
XZY



Brazilwood
XZE



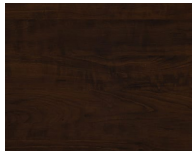
Wild Cherry
XZ1



Walnut XZZ



Empire Mahogany
XZ3



Espresso Pearwood
XY6

Woodgrains
Grade 2



Phantom Pearl
XY0



Phantom Ecrú
XY1

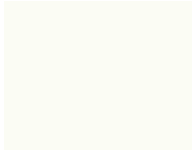


Phantom Charcoal
XY2

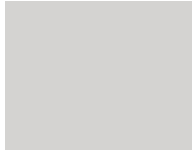
Paint
Smooth/
Textured



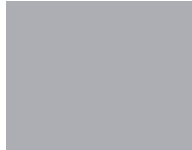
Designer White
DW/TDW



Stucco J/TJ



Light Gray L/TL



Gray G/TG



Platinum PA



Sand Y/TY



Charcoal K/TK

SEATING FABRIC TECHNICAL INFORMATION

Pattern Name	Grade	Content	Finish	Weight	Repeat	Lightfastness	Flame Resistance	Crocking	Abrasion	Cleaning Code
Bobby	B	68% Repreve® post-consumer recycled polyester 32% polyester	none	1.24 lb.	.875"v x .5"h	Class 3,5 @40 hours	CA Bulletin 117 2013; UFAC Class 1	Grade 4 min. dry & Grade 3 min. wet	150,000 D.R.	W-S
Cadence	A	90% polyester, 6% pre-consumer recycled polyester, 4% post-consumer recycled polyester	stain repellent	12.9+/- 1.0 oz./lin. yd.	1.5"v x 2"h	Class 4 @40 hours	CA Bulletin 117 2013; UFAC Class 1, NFPA 260 Class 1	Grade 4 min. dry & Grade 3 min. wet	100,000 D.R.	W-S
Dillon	A	100% polyurethane	Anti-microbial, Silver Ion technology	20.16 oz./lin. yd.	n/a	Class 4 @40 hours	CA Bulletin 117 2013; UFAC Class 1, NFPA 260 Class 1, MVSS 302, IMO A. 652 (16) 8.2	Grade 4 dry & Grade 4 wet	200,000 D.R.	W-S. Difficult stains use Fantastik® or Formula 409*
Graph	B	75% Repreve® post-consumer recycled polyester, 25% polyester	none	.86 lb.	3.375"v x 7.5"h	Class 4 @40 hours	CA Bulletin 117 2013; UFAC Class 1, NFPA 260 Class 1	Grade 4 min. dry & Grade 3 min. wet	170,000 D.R.	W
Guild	B	71% post-consumer recycled polyester, 29% polyester	none	1.0 lb.	none	Class 4 @40 hours	CA Bulletin 117 2013; UFAC Class 1, NFPA 260 Class 1	Grade 4 min. dry & Grade 3 min. wet	90,000 D.R.	W-S
Input	A	94% post-consumer recycled polyester, 6% pre-consumer recycled polyester	none	11.1 +/- 1.0 oz./lin. yd.	2.5"v x 12.25"h	Class 4 @40 hours	CA Bulletin 117 2013; UFAC Class 1, NFPA 260 Class 1	Grade 4 min. dry & Grade 3 min. wet	100,000 D.R.	W-S
Intuition	A	55% post-consumer recycled polyester, 34% pre-consumer recycled polyester, 11% polyester	stain repellent	11.2 +/- 1.0 oz./lin. yd.	none	Class 4 @40 hours	CA Bulletin 117 2013; UFAC Class 1, NFPA 260 Class 1, ASTM E84 Class 1	Grade 4 min. dry & Grade 3 min. wet	100,000 D.R.	W-S
Linette	B	100% vinyl	Anti-microbial, i-clean™	40.19 oz./lin. yd.	n/a	Class 4/200 hours min.	CA Bulletin 117 2013; UFAC Class 1, NFPA 260 Class 1	Grade 5 dry & Grade 5 wet	exceeds 100,000 D.R.	W-S. Difficult stains use Fantastik® or Formula 409*
Open House	A	65% pre-consumer recycled polyester, 35% post-consumer recycled polyester	none	13.1 +/- 1.0 oz./lin. yd.	n/a	Class 4 @40 hours	CA Bulletin 117 2013; UFAC Class 1, NFPA 260 Class 1, ASTM E 84 Class 1	Grade 4 min. dry & Grade 3 min. wet	250,000 D.R.	W-S
Punch Card	B	61% polyester, 39% Repreve® recycled polyester	none	15.4 oz.	7.5"v x 11"h	Class 4 @40 hours	CA Bulletin 117 2013; UFAC Class 1, NFPA 260 Class 1	Grade 4 min. dry & Grade 3 min. wet	40,000 D.R.	W
Smith	A	100% polyester	i-clean™	19.33 oz./lin. yd.	n/a	Class 4 @40 hours	CA Bulletin 117 2013; UFAC Class 1, NFPA 260 Class 1, ASTM E84 Class 1	Grade 4 min. dry & Grade 3 min. wet	95,000 D.R.	W
Stancil	B	100% polyester	i-clean™	19.33 oz./lin. yd.	n/a	Class 4 @40 hours	CA Bulletin 117 2013; UFAC Class 1, NFPA 260 Class 1, ASTM E84 Class 1	Grade 4 min. dry & Grade 3 min. wet	95,000 D.R.	W
Tome	A	100% polyester	i-clean™	10.61 oz./lin. Yd.	n/a	Class 4 @40 hours	CA Bulletin 117 2013; UFAC Class 1, NFPA 260 Class 1	Grade 4 min. dry & Grade 3 min. wet	95,000 D.R.	W

SEATING FABRIC PRODUCT APPLICATION INFORMA-

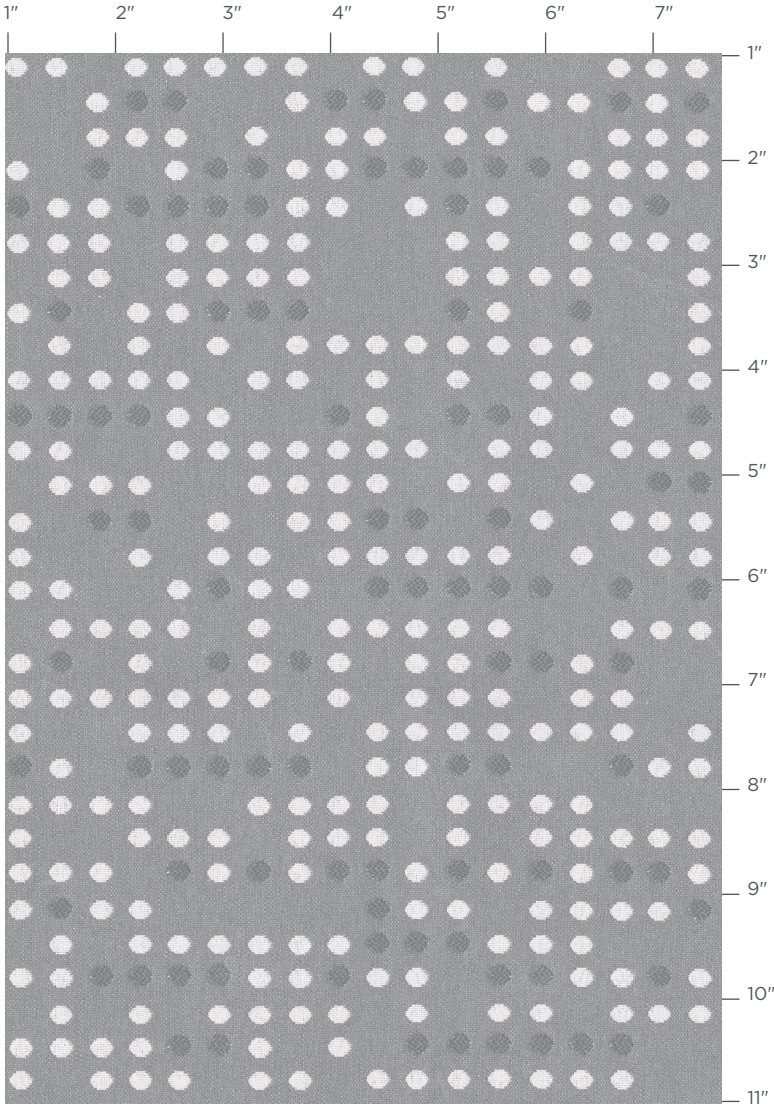
Pattern	Grade	Cushion Tops	Live, Live II	Jet	Sketch	Zego	Parley	Plus
Bobby	B	A	A	A	A	•	A	A
Cadence	A	A	A	A	A	•	A	•
Dillon	A	A	A	A	A	A	A	A
Graph*	B	A	A	A	A	•	A	A
Guild	B	A	A	A	A	•	A	A
Input	A	A	A	A	A	•	A	A
Intuition	A	A	A	A	A	•	A	A
Linette	B	A	A	A	A	•	A	A
Open House	A	A	A	A	A	A	•	A
Punch Card	B	A	A	A	A	•	A	A
Smith	A	A	A	A	A	•	A	A
Stancil	B	A	A	A	A	•	A	A
Tome	A	A	A	A	A	•	A	A

A = Approved • = Does not apply

* Graph on Parley will be charged as a Grade F.

Go to Trendway.com for product application information on products not listed.

Punch Card pattern repeat shown at 50% scale



PANEL FABRICS TECHNICAL INFORMATION

Pattern Name	Grade	Content	Lightfastness	Flame Resistance	Repeat	Weight	Width	Cleaning Code
Amaze	1	82% polyester, 18% post-consumer recycled polyester	Grade 4 min. @ 40 hours	ASTM E84 Class 1 or A	12.8" v x 11.7" h	12.9 +/- 1.0 oz./lin. yd.	66"	W-S
Anchorage	3	65% pre-consumer recycled polyester, 35% post consumer recycled polyester	Grade 4 min. @ 40 hours	CA Tech Bulletin 117-2013 Sec 1, NFPA 260/UFAC class 1, ASTM E84 Class 1 or A	none	15.0 +/- 1.0 oz./lin. yd.	66"	W-S
Aurora	1	80% post-consumer recycled polyester, 20% polyester	Grade 4 min. @ 40 hours	Cal. 117-2013 pass	none	12.94 oz. / lin. yd.	66"	W-S
Chase	1	74% polyester, 26% post-consumer recycled polyester	Grade 4 min. @ 40 hours	ASTM E84 Class 1 or A	none	13.3 +/- 1.0 oz./lin. yd.	66"	W-S
Framework	0	100% polyester	Grade 4.5 min. @ 40 hours	ASTM E84 Class 1 or A	none	10.5 oz./lin. yd.	66"	W-S
Glint	3	100% post-consumer recycled polyester	Class 4.5 @ 40 hours	ASTM E84	none	1.06 lbs.	66"	W-S
Intermix	1	100% pre-consumer recycled polyester	Grade 4 min. @ 40 hours	ASTM E84 Class 1 or A	none	15.3 +/- 1.0 oz. per lin. Yd.	66"	W-S
Merge	0	75% post-consumer recycled polyester, 25% polyester	Class 4.5 @ 40 hours	ASTM E84 Class 1 or A	none	16.2 oz./lin. yd.	66"	W-S
Mingle	1	77% pre-consumer recycled polyester, 23% post-consumer recycled polyester	Grade 4 min. @ 40 hours	ASTM E84 Class 1 or A	16.7" v x 16.2" h	10.9 +/- 1.0 oz./lin. yd.	66"	W-S
Netiquette	1	31% recycled polyester, 69% polyester	Grade 4 min. @ 40 hours	ASTM E84 Class 1 or A	7.25" v x 14"h	9.5 oz./lin. yd.	66"	W-S
Pact	2	65% post-industrial recycled polyester, 35% post-consumer recycled polyester	Class 4 @ 60 hours	CA Bulletin 117 2013; UFAC Class 1; ASTM E84	.125" v x .125"h	.81 lbs.	66"	W-S
Pursuit	1	100% pre-consumer recycled polyester	Grade 4 min. @ 40 hours	ASTM E84 Class 1 or A	none	9.1 +/- .5 oz./lin. Yd.	66"	W-S
Tabby Weave	2	100% pre-consumer recycled polyester	Grade 4 min. @ 40 hours	ASTM E84 Class 1 or A	none	16.0 +/- .5 oz./lin. Yd.	66"	W-S

PANEL FABRIC TECHNICAL INFORMATION



Pattern	Grade	Capture Tiles	Choices Panels/ All Systems Components	Fabric Screens	Freestanding Tackboards		Cushion Tops	TrendWall	Volo
					< 60" H	>60" H			
Amaze	1	A	A	A	A	A	•	A	A
Anchorage	3	A	A	A	A	A	•	•	A
Aurora	1	A	A	A	A	A	•	A	A
Chase	1	A	A	A	A	A	•	A	A
Framework	0	A	A	A	A	A	•	•	A
Glint	3	A	A	A	A	A	•	A	A
Intermix	1	A	A	•	A	A	•	A	A
Intuition	3	A	•	•	A	A	A	•	A
Merge	0	A	A	A	A	A	A	A	A
Mingle	1	A	A	A	A	A	•	A	A
Netiquette*	1	A	•	•	A	A	•	A	A
Pact	2	A	A	A	A	A	•	A	A
Pursuit	1	A	A	A	A	A	•	A	A
Tabby Weave	2	A	A	A	A	A	•	A	A

A = Approved • = Does not apply

* Approved for Choices® Tackboards and Flipper Doors

Go to Trendway.com for product application information on products not listed.

Trendway >

Fellowes
brands. | FAMILY BUSINESS
SINCE 1917

TRENDWAY HEADQUARTERS | Holland, Michigan

CHICAGO | LOS ANGELES | WASHINGTON, DC

Trendway.com | April 2022

